

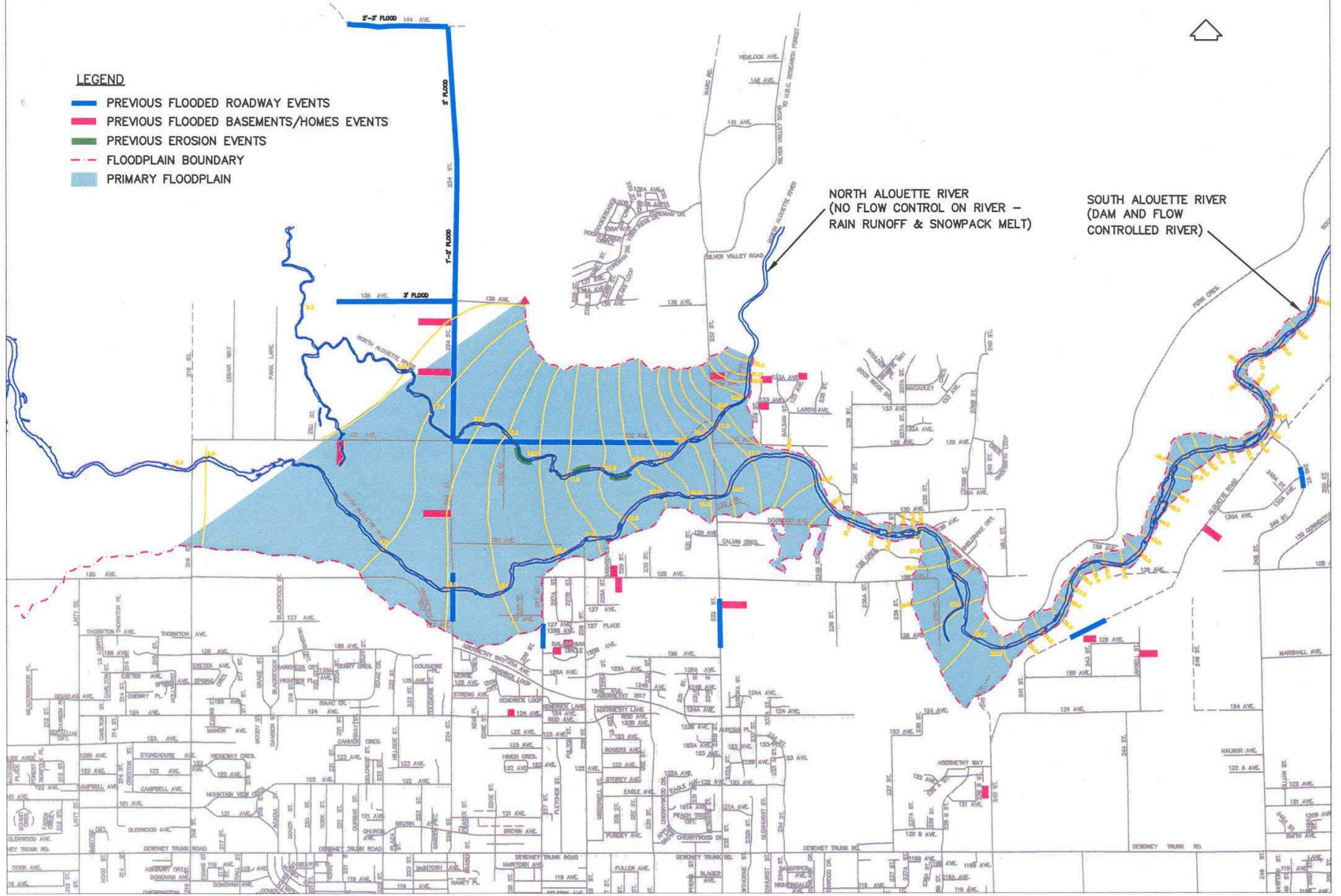
# Alouette Rivers Flood Management Workshop

April 4, 2009

# ALOUETTE RIVER FLOOD MANAGEMENT TASK FORCE

## LEGEND

- PREVIOUS FLOODED ROADWAY EVENTS
- PREVIOUS FLOODED BASEMENTS/HOMES EVENTS
- PREVIOUS EROSION EVENTS
- FLOODPLAIN BOUNDARY
- PRIMARY FLOODPLAIN



# The area

- The Alouette Rivers are a resource to Maple Ridge and the Region
- Fish, wildlife and ecosystem values are important to Maple Ridge
- Public safety, specifically flood protection is important
- Rivers have to be managed as a system
- Climate change is a growing concern
- A number of studies have been completed
- A number of groups are involved in the area

# List of Reports Regarding the Alouette Rivers

- Golder & Associates (2001) North Alouette River Flooding Assessment Phase 1.
- Walsh and Krzesinska (1997). Alouette River Watershed Water Quality and Invertebrate Study. Prepared for the Alouette River Management Society.
- Dayton & Knight Ltd. (1988). Alouette River Studies.
- Northwest hydraulic Consultants (2004). North Alouette River Assessment of Channel Behaviour and Hydraulics - Final Report.
- Alouette Valley Farm & Homeowners Association (2007) The North Alouette River - Log Jams and River Obstructions River Dredging Ditches & Culverts. (Electronic copy available)
- CBA Engineering Ltd. (1986). Report on the Effects on Dyke Construction at Golden Eagle Ranch on North Alouette River Flood Levels.
- Nichols, R.W. (1990). A Design Brief on the Floodplain Mapping Study - Alouette and North Alouette Rivers. BC Environment.
- Envirowest (1999). Interim Environmental Monitoring Report: Alouette River Tributary T-2 Bank Stabilization Works.
- Fraser Basin Council (2001) Comprehensive Management for Flood Protection Works. Dike and Channel Maintenance and Habitat Subcommittee of the Joint Program Committee
- For Integrated Flood Hazard Management. (Electronic copy available)
- Fraser Basin Council (2002) Summary of Recommendations from the Joint Program Committee for Integrated Flood Hazard Management. (Electronic copy available)
- Baumann Engineering (2007). Initial Comments on North Alouette flooding on March 11 and 12, 2007 that damaged your nursery and other facilities. (Electronic copy available)
- Bland Engineering (1996) North Alouette River at 224 Street Effects of Scalping Gravel Bars

# 2007-2008 Task Force

- Approach the public and stakeholders to:
  - confirm the situation and issues
  - identify areas of concern,
- Develop and submit to Maple Ridge Council a strategy of ways to:
  - manage and/or improve the flood risks along the North and South Alouette rivers.

# Task Force

- The Task Force identified 6 issue areas:
  - River hydrology, hydraulics and flood plain mapping
  - Operation and maintenance
  - Flood response
  - Flood proofing and protection
  - Data collection and information sharing
  - Flood plain management roles and responsibilities
- Specific issues and potential options have been explored and identified by the Task Force.

# Task Force

- Council accepted the recommendations of the Task Force
- Published on the Corporate website
- Work program has been initiated
- Workshop was identified as a key item