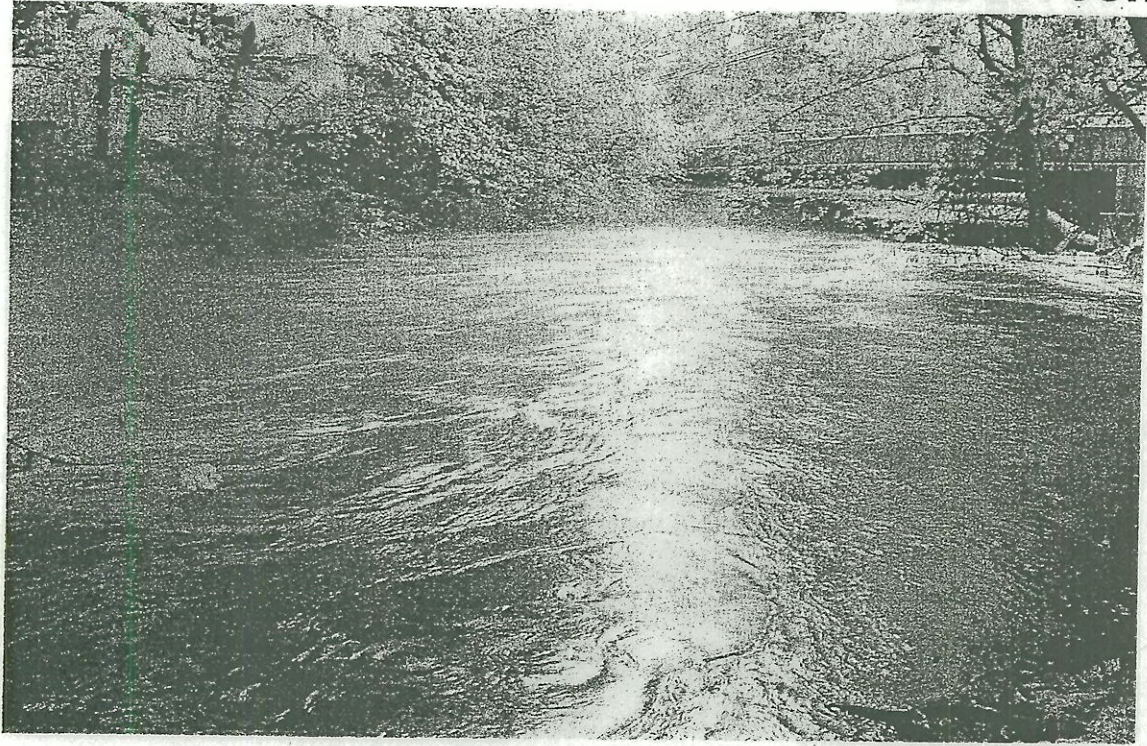


**EarthTech**



---

**North Alouette River  
Assessment of Channel Behaviour and Hydraulics  
Final Report**

---

**January 2004**

L05-011-0051

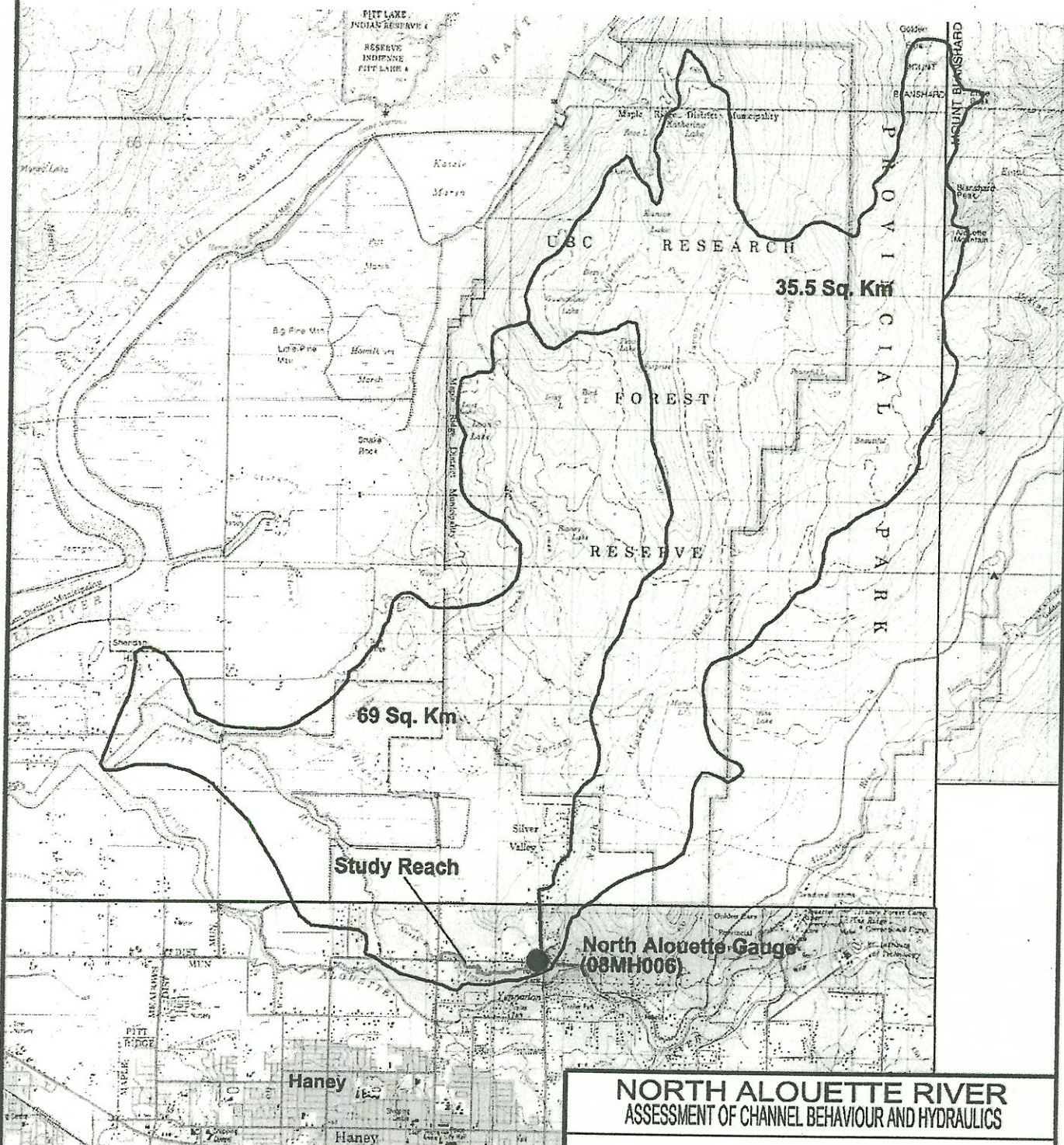
**nhc** northwest  
hydraulic  
consultants



## References

- Armstrong, J.E. 1984. *Environmental and Engineering Applications of the Surficial Geology of the Fraser Lowland, British Columbia*. Geological Survey of Canada Paper 83-23.
- Environment Canada. 2002. *Climate Normals 1971-2000: Haney UBC RF Admin, BC 1103332*. Internet publication [http://www.climat.meteo.ec.gc.ca/climate\\_normals](http://www.climat.meteo.ec.gc.ca/climate_normals)
- Fahenstock, R.K. 1963. *Morphology and hydrology of a glacial stream – White River, Mount Rainier, Washington*. United States Geological Survey Professional Paper 422A.
- Gower, Yeung and Associates Ltd. 1978. *232<sup>nd</sup> St. Over South Alouette (should read: 132<sup>nd</sup> Ave. over North Alouette), Elevation*. Construction drawing prepared for the District of Maple Ridge.
- Knighton, D. 1984. *Fluvial Forms and Processes*. Halsted Press, John Wiley & Sons Inc., New York, NY
- Leopold, L.B. and Wolman, M.G. 1957. *River Channel Patterns – Braided, Meandering and Straight*. United States Geological Survey Professional Paper 282B.
- \* northwest hydraulic consultants ltd. 1994. *132 Ave. Bridge Replacement, Maple Ridge, North Alouette River*. Draft document prepared for Reid Crowther and Partners Ltd.
- Reid Crowther and Partners Ltd. 1994. *Option 'B' 2 Span Conc. 'T' Girder, 132 Bridge Maple Ridge; Plan and Elevation; SK-1B1 and SK-1B2*. Drawings prepared for the District of Maple Ridge.
- Shields, A. 1936. *Anwendung der Ahnlichkeitsmechanik und der turbulenzforschung auf die Geschiebebewegung*. Mitteilung der preussischen Versuchsanstalt fur Wasserbau und Schiffbau 26, Berlin.
- UBC Forestry. 200X. *Malcolm Knapp Research Forest, Location and Ecology*. Internet Publication <http://www.forestry.ubc.ca/resfor/general/loceco.htm>
- Water Survey of Canada. 2000. *Instantaneous and Daily Discharge Records: North Alouette River at 232<sup>nd</sup> Street, Maple Ridge 08MH006*. Hydat CD-ROM Version 2000, 2.01





Background image source:  
Spectrum Digital Mapping, Courtenay, BC

**NORTH ALOUETTE RIVER  
ASSESSMENT OF CHANNEL BEHAVIOUR AND HYDRAULICS**

**North Alouette River  
Study Area Location**

NOV 28, 2003	REV: 00	DWG BY: DG
northwest hydraulic consultants		

FIGURE 1

**Mean Annual Hydrograph**  
*North Alouette River at 232nd St, Maple Ridge (08MH006)*

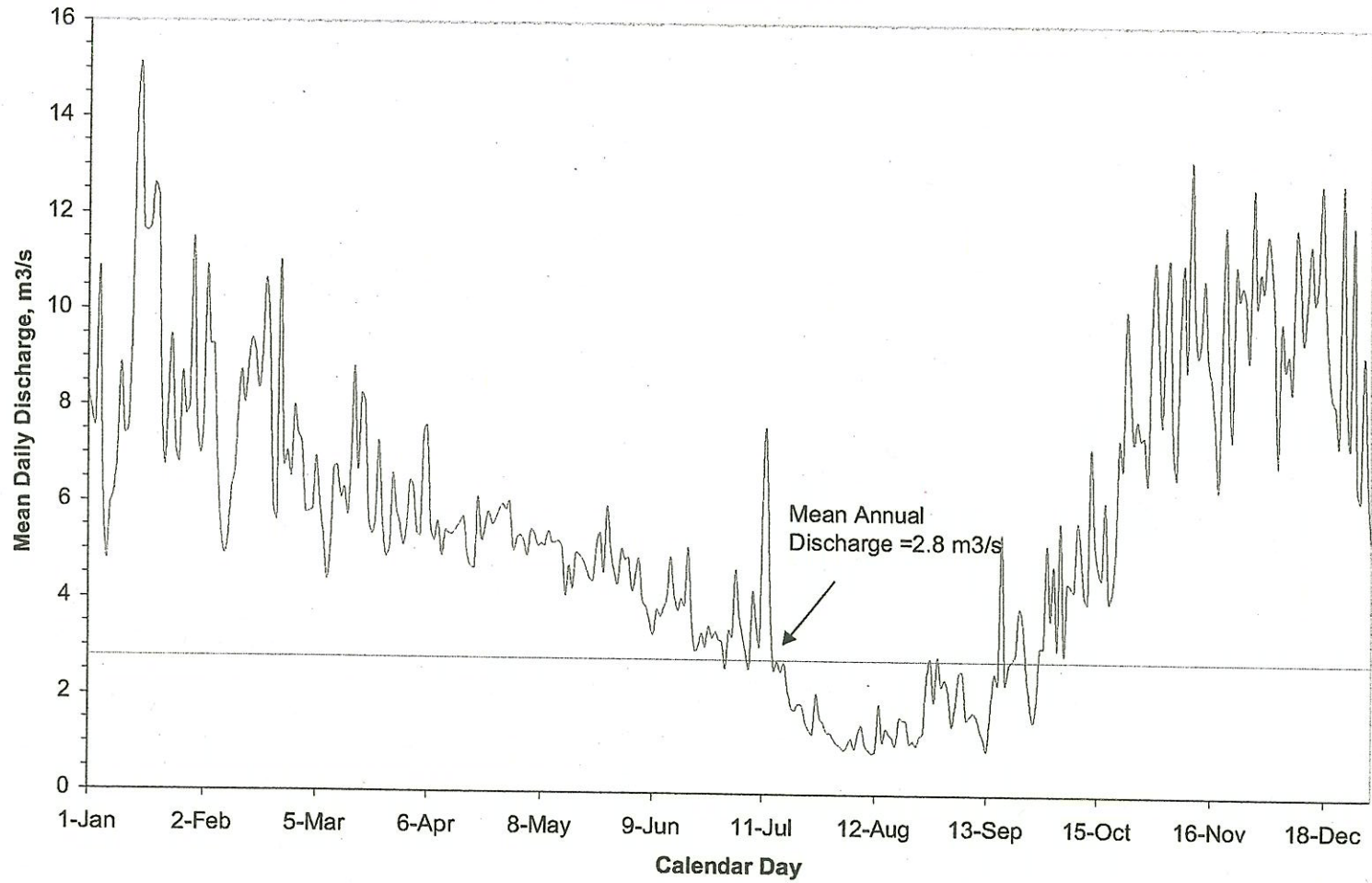


FIGURE 2



## Annual Maximum Flood Discharges

*North Alouette River at 232nd St, Maple Ridge (08MH006)*

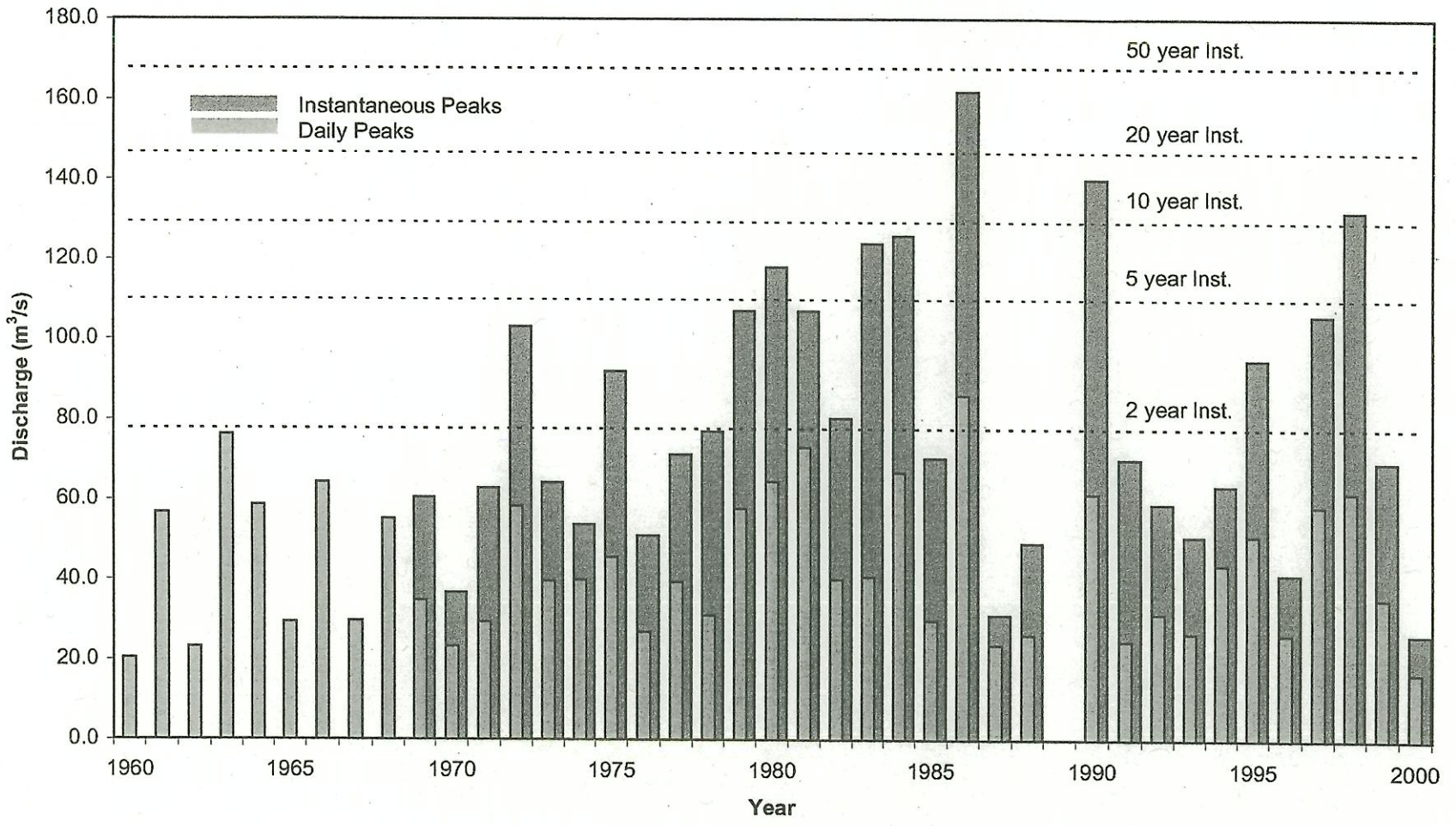


FIGURE 3